

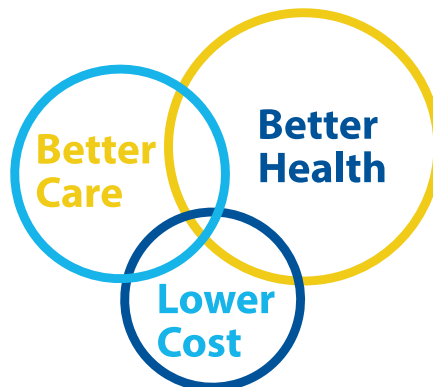


QIN-QIO HISTORY

In August of 2014, the Center for Medicare and Medicaid Services (CMS) remodeled its Quality Improvement Organization (QIO) Program to function as two types of QIOs: Beneficiary and Family Centered Care-QIOs (BFCC-QIOs) and Quality Innovation Network-QIOs (QIN-QIOs). The two national BFCC-QIOs manage all beneficiary complaints and appeals, while the 14 regional QIN-QIOs work with providers, community partners, and beneficiaries on multiple data-driven quality improvement initiatives. Telligen serves as the QIN-QIO for Colorado, Illinois, and Iowa to reduce health care disparities.

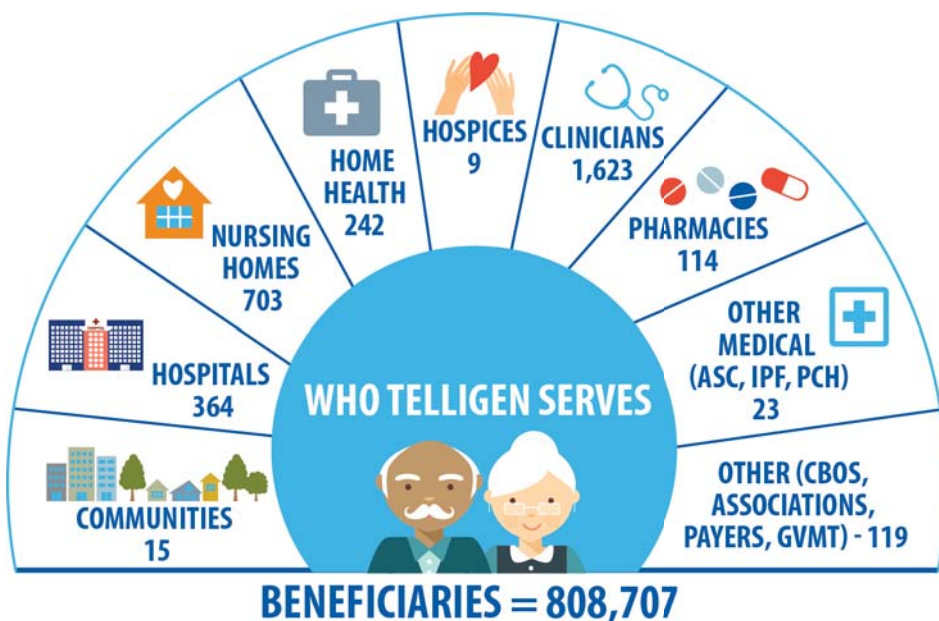
Contact a Telligen quality facilitator today or visit www.telligenqinqio.com to put the Telligen QIN-QIO to work for you.

THE OVERARCHING PURPOSE OF QIO WORK IS SIMPLE:



- Diabetes Care:** Provide DSME classes and Improve clinical outcomes
- Cardiac Health:** Prevent heart attacks and strokes through evidence-based practice
- Health Information Technology:** Support through meaningful use
- Quality Reporting:** Provide technical assistance for value-based payment programs
- Care Coordination and Medication Safety:** Collaborate with communities to reduce readmission rates
- Nursing Home Care:** Use quality improvement strategies to improve care
- Health-care Associated Infections:** Support the reduction of HAI in hospitals
- Immunizations:** Promote flu, pneumonia, and shingles vaccinations

WHAT ARE THE QUALITY IMPROVEMENT INITIATIVES?



REFERENCES:

Self-reported data. Contains duplicate counts based upon participation in multiple tasks. Estimated totals based on a sum of reported providers/facilities participating in each task; overlap among tasks is likely. Sources- *Beneficiaries:* CMS Denominator file; *Nursing homes:* Nursing Home Compare; *Hospitals:* Health Services Provider Table; *Clinicians:* Physician Compare; QIN Deliverables (July 2015)

<http://qioprogram.org/sites/default/files/progress-report-2014/index.html>

<https://www.cms.gov/Medicare/Quality-Initiatives-Patient-Assessment-Instruments/QualityImprovementOrgs/index.html?redirect=/qualityimprovementorgs/>

